



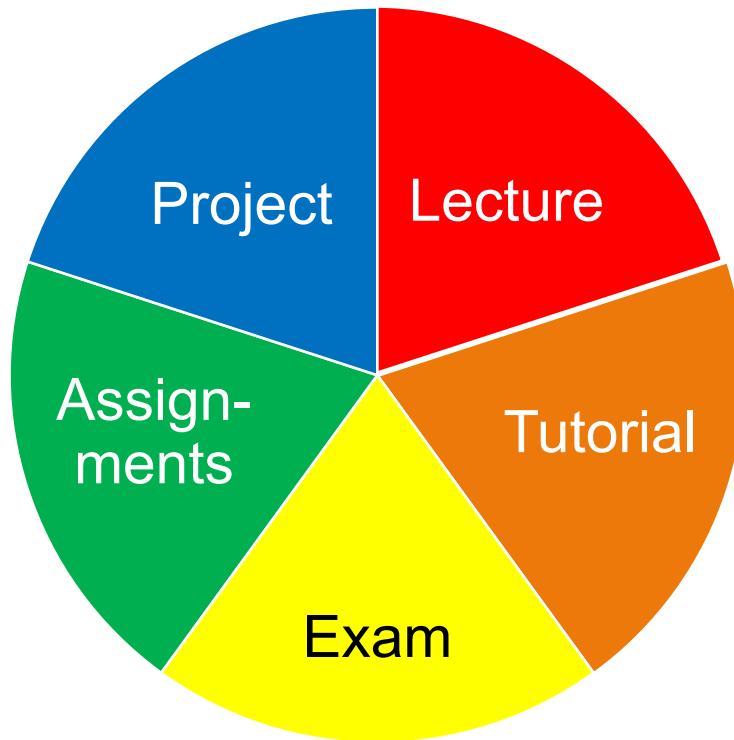
NUS
National University
of Singapore

| **Computing**

CS4248 Natural Language Processing

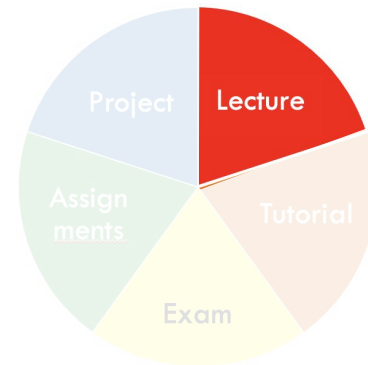
Lecture 0 — Admin

Components



You can find all of the information also on the [CS4248 Canvas Site](#)

Lecture Format



- **Physical Lectures** (both sections L1 and L2)

- L1: Fri, 9:00-12:00 (LT15) + L2: Mon, 18:30-21:30 (COM1-0206)
- All lectures will be recorded and made available on Canvas
(**Important:** the upload will be delayed to encourage attendance)

- **2-sections setup of CS4248**

- 2 sections (L1 and L2) to handle the enrollment numbers
- Both sections share syllabus, assessment and projects
- 12 lectures in total due to public holidays
(L1: Good Friday 29 Mar; L2: CNY 10 Feb)
- Tutorials follow on Tuesday and Wednesday
(usually a week later)

- You can choose a lecture session (as long there is enough space)
- You can choose team mates for the project from either section

- This affects which session covers the week's topic first

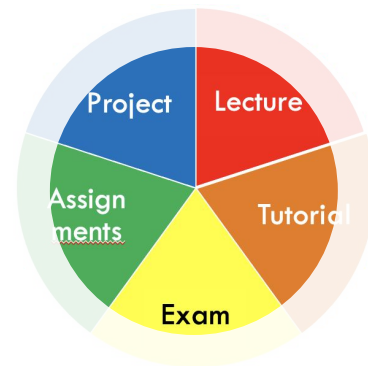
Participation (5%)

- Actively Participate!

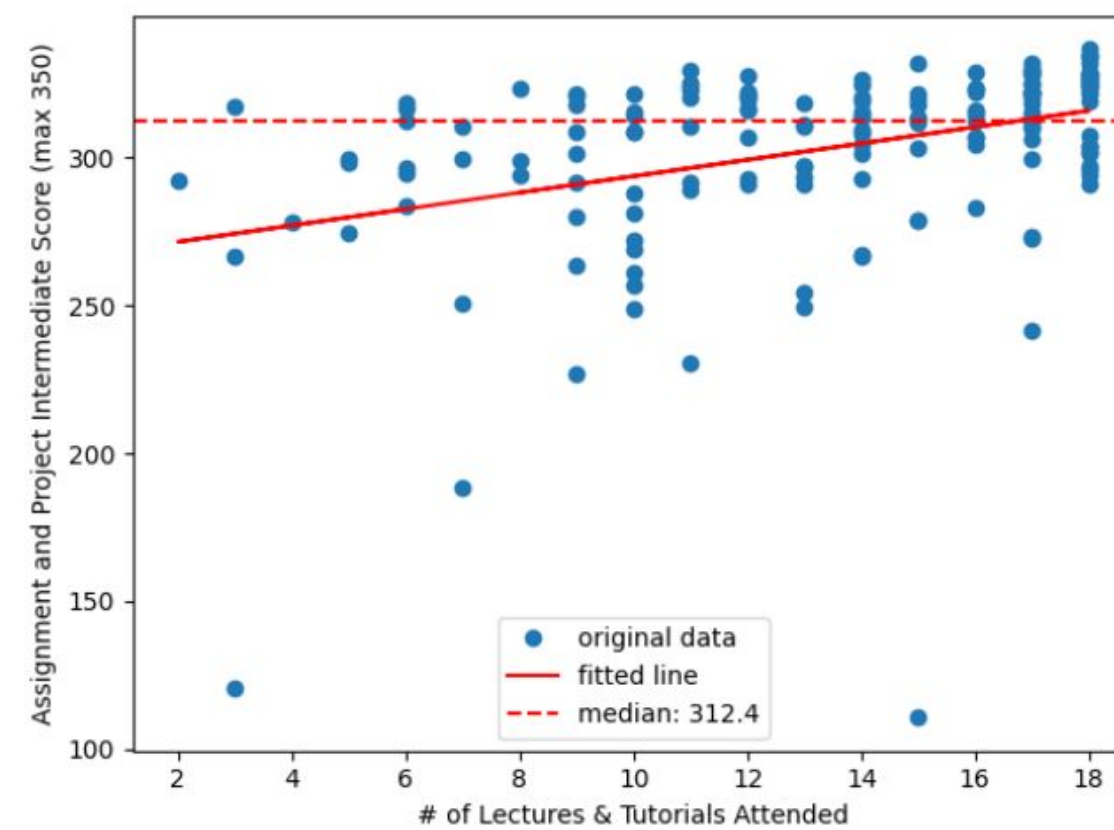
- During lectures and tutorials
- It's in your own interest as it's important for your understanding and commitment to the course

- Assessed in Different Components

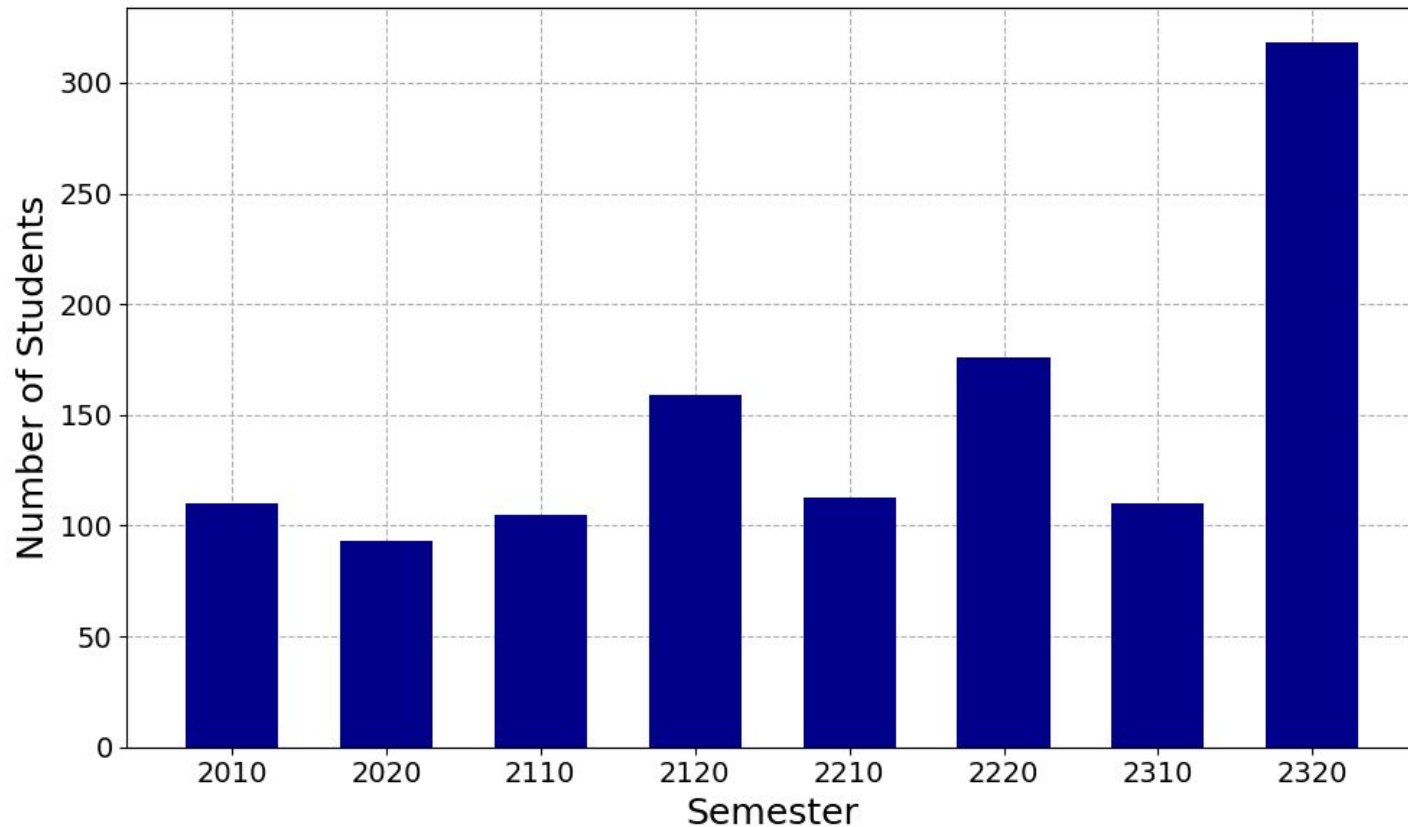
- **Tutorial**: Tutorial Leader
- **Project**: Project Consultations
- **Lecture**: In-Lecture Participation
- CS4248: Pre-flight and Midterm Survey
- CS4248: Lecturer's Discretion



Attendance Matters



NLP is Going Strong



Outline

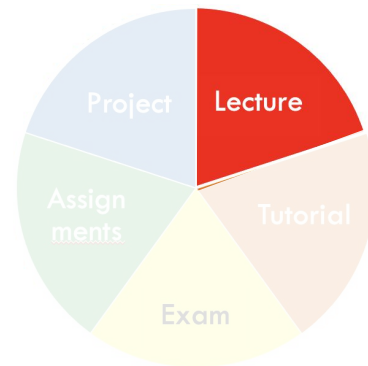
- **Components**
- Logistics

Guests in Lecture

We're happy to allow you to come, but we need to help our registered students first (our load is 2x from last year!)

- Can come to lecture
- Can access materials
- Can ask questions that the whole class can answer
- Cannot come to tutorial
- Cannot participate in a project group
- Cannot submit assignments / exams
- Cannot ask questions that require individual feedback

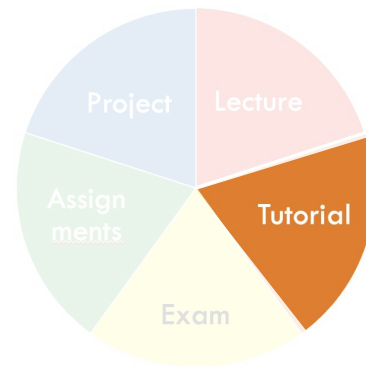
- You can choose a lecture session (as long there is enough space)



We can add you to the guest access list. Ask a fellow student to add your name / NUSNET ID, NUSNET email to the discussion forum

Tutorials

- Tutorials follow right after the lectures
 - Lectures Fri (L1) / Mon (L2) → Tutorials (Tue / Wed)
- Preliminary schedule*
 - T01–T05: Tuesdays 9:00-1400 (COM1-0210)
 - T06–T10: Wednesdays 9:00-14:00 (COM3-B1-10)
 - T11: Tuesdays 16:00-17:00 (COM1-0209)
 - T12-T14: Wednesdays 16:00-17:00 & 18:00-20:00 (COM3-B1-10)



*subject to change, depending on your input; it's part of our short survey

Final Exam (35%)

- Exemplify — open book, blocked Internet
 - You may prepare materials beforehand, but no online referencing
 - No use of local AI Tools, such as a hosted LLM
 - Preliminary format: MCQ / MRQ / Short Answer
- Setup (location)
 - Physical venue to be assigned later



Individual Assignments (30%)

- 3 assignments

- Assignment 1: 10% (Out: W03; Due: W05; 2 weeks)
- Assignment 2: 10% (Out: W05; Due: W07; 3 weeks)
- Assignment 3: 10% (Out: W07; Due: W09; 2 weeks)

- Assessment / Grading

- Answers to be autograded, code may be examined, and we will check for code plagiarism.
No use of AI coding or writing aids (ChatGPT, etc.)
- Rigorous enforcement of the Academic Honesty Policy



Project (35%)

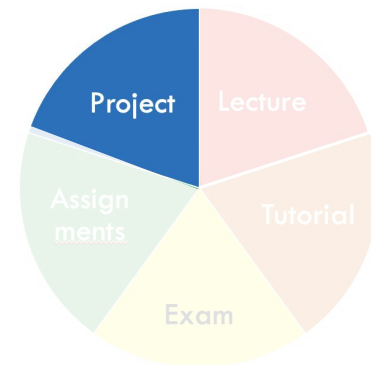
- Practical hands-on Mini Project

(confined to the second half of the semester)

- W03: You form mini-groups of size 1–3.
- W04: We'll match based on expertise & interest to compose your final group.
- W04: We'll match you to a Project Mentor who will check on you, provide guiding feedback and assess your project.

- 2 deliverables

- W07: Intermediate Update (5%), as a slide deck and in Canvas Quiz
(Instructor 60% and assigned Project Mentor 40% mark each project)
- W12: Final Report (30%), as a written scientific report
(Instructor 65%, Project Mentor 26%, and Peers 9% — 3% from 3 other teams)
- Follow-on TEAMMATES intragroup evaluation after each deliverable
(may moderate your individual Final Report grade by 10–30%)



Outline

- Components
- **Logistics**

Technology Stack

- Canvas

- Announcements
- Project group management
- Files
(out: lecture slides, in: assignments)
- Discussion
(general questions + certain lecture participation)
- Quiz
(surveys, final exam)
- Gradebook
(please check to ensure your grades are correctly synced)

- Python & Jupyter (Colab)

- Useful to set up in advance

- SoC Cluster

- For project work (TBA)

Note: Your Project Mentor and/or Tutorial Leader may also use another tech stack of their choice to keep in touch with you.

Tutorial Registration

- Head TA for Tutorial Registration problems:

Enzio Kam, COM2 B1-03

ekam@comp.nus.edu.sg

We also need to know more about your preferences for your tutorial formats; see the Pre-flight Survey in Canvas.



- Tutorial consultations:
 - Tutorial Leaders may make specific consultation hours open for you

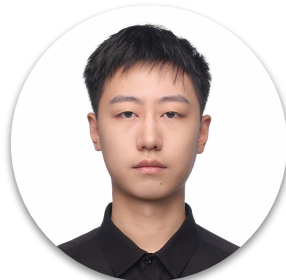
Teaching Assistants



Rishabh Anand
rishabha@u.nus.edu



Luo Yang
yang_luo@u.nus.edu



Liu Chenyan
chenyan@u.nus.edu



Isaac Tay
isaactayyi@u.nus.edu



Cao Hannan
caoh@u.nus.edu



Miao Yisong
yisong@u.nus.edu



He Xian
xian.he@u.nus.edu



Yiran Zhao
zhaoyiran@u.nus.edu



Naaman Tan
tannaaman@u.nus.edu

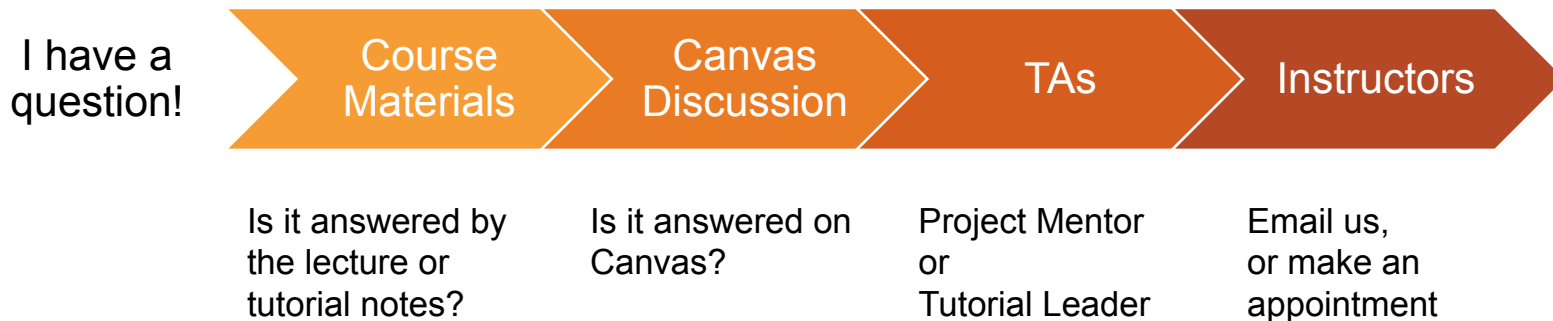


Esther Gan
esther.gan@u.nus.edu

Recommendation: When writing an email, best always use "[CS4248]" in your subject (e.g., "[CS4248] Assignment Feedback")

Getting your Questions Answered

- Questions are good, and we want to hear from you!
 - To handle the large class size, please try to adhere to the following “workflow”



Some exceptions:

- Your question might give away an assignment solution → Please skip the Discussions :)
- Your question is of personal nature → Don't hesitate to contact the instructors